

PRODUCT CATALOGUE





"THIS IS JUST THE START"
WHAT'S YOUR
#UNSTOPPABLEAMBITION

► ► ► ► ►
PRODUCTS

**DAILY
WHEELCHAIRS**

Carbon Fibre	VEYPR SUB4
Titanium G9	OCTANE
Titanium G9	OCTANE FX
Titanium G9	OCTANE SUB4
Titanium G2	HILITE
Titanium G2	HILITE XTR
Titanium G2	MAXLITE
Aluminium	TIGA
Aluminium	TIGA F2
Aluminium	TIGA FX
Aluminium	TIGA SUB4
Aluminium	TIGA JNR

**SPORT
WHEELCHAIRS**

Basketball	ELITE
Basketball	ELITE X
Basketball	ELITE CX
Tennis	GRANDSLAM
Tennis	GRANDSLAM X
Tennis	GRANDSLAM CX
Rugby	PREDATOR
Multi Sport	CLUB SPORT
Multi Sport	ALLSTAR
Multi Sport	ALLSTAR G2
Multi Sport	ALLSTAR A2
Racing	SHARK RS
Racing	SHARK RT
Racing	SPRINT



WE BELIEVE IN...

**PUSHING THE LIMITS, CHALLENGING
THE CONVENTIONAL, BREAKING
DOWN BARRIERS
AND EMPOWERING PEOPLE.**



In 1988 the founders of RGK had a vision to positively change the way wheelchair users would live forever by creating made to measure wheelchairs that were light and reliable in order to improve independence and equality.

As a result, the opportunities to be empowered today have never been higher, whether it's a Paralympic legend, TV super star or what you dreamed of growing up.

We are so proud and dedicated to continue this vision, by offering our customers new and exciting products with exceptional service and support. We look forward to supporting your journey whatever it may be.

WE ARE MADE TO MEASURE

Respecting your individuality is our passion.

WE ARE EXPERTS

Sharing our knowledge is our pastime.

WE ARE PERFECTIONISTS

Achieving the highest quality is our aim.

WE ARE AT YOUR SERVICE

Creating your perfect wheelchair is why we exist.

WE ARE MARKET LEADERS

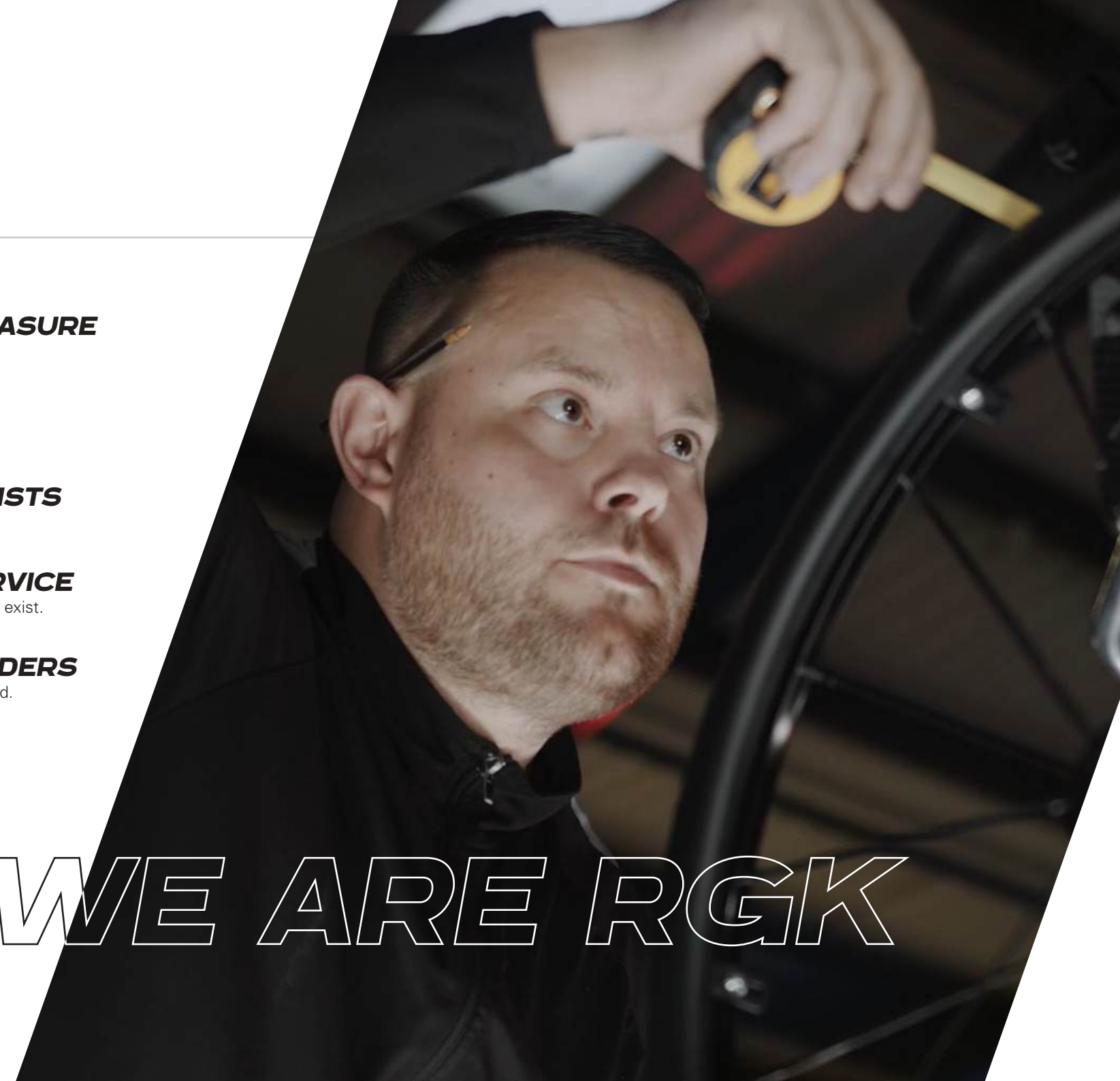
Pushing the boundaries in design is standard.

WE ARE PERSONAL

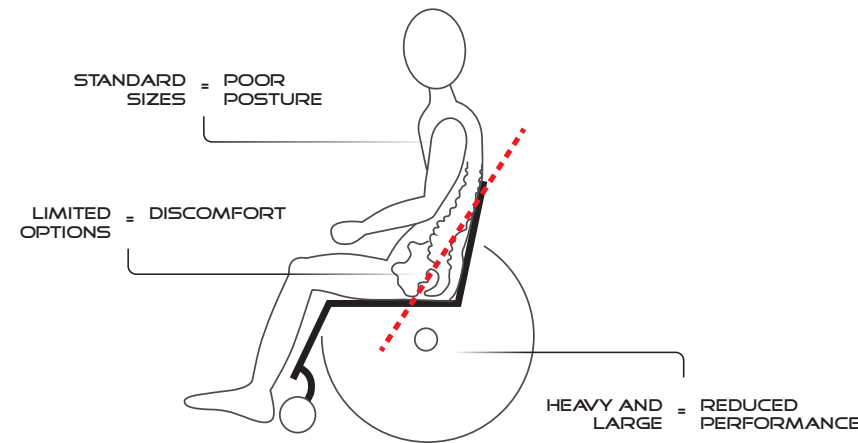
Supporting your journey is guaranteed.



WE ARE RGK



THE PROBLEM: POOR FITTING WHEELCHAIRS



THE ISSUES:

STANDARD SIZES

Configurable wheelchair sizes can be limiting as they do not fit everyone individually. Many riders are in a wheelchair that does not fit them correctly.

LIMITED OPTIONS

Some wheelchairs can be basic in design and have limited options. This can restrict the ability to become more active and may not meet the user's individual requirements.

HEAVY AND LARGE

Not all wheelchairs are optimised to provide the most light and efficient solution. They can be large in size, use low cost materials and have a modular design which adds weight to the chair so more energy is needed to push, manoeuvre and lift.

THE EFFECTS

POOR POSTURE

Poor fitting wheelchairs can force the pelvis and spine into positions which create poor posture which, if maintained over time, could cause severe health problems including: fatigue, pain, infections, tissue breakdown, respiratory problems and persistent injuries.

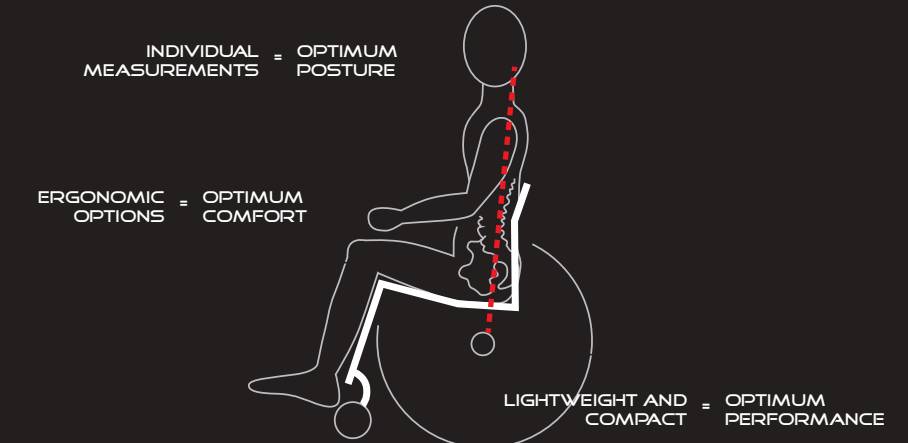
DISCOMFORT

Being uncomfortable reduces confidence and increases the risk of health problems and pain which riders may experience in an ill fitting wheelchair.

REDUCED PERFORMANCE

A heavy wheelchair can limit its performance and make it difficult to use, particularly if the biomechanics are not optimised. More energy is needed to propel and manoeuvre which increases fatigue and puts more stress and strain on the upper body.

THE SOLUTION: MADE TO MEASURE WHEELCHAIRS



WHAT IS MADE TO MEASURE

INDIVIDUAL MEASUREMENTS

Over 30 individual measurements are taken of the rider in the wheelchair, so that it fits their individual requirements.

ERGONOMIC OPTIONS

A wide range of ergonomic options are available to provide optimum comfort, balance and posture.

LIGHTWEIGHT AND COMPACT

The lightest possible solution is achieved using individual measurements, the highest quality materials and a rigid frame design.

BENEFITS OF MADE TO MEASURE

OPTIMUM POSTURE

Sitting in the correct position can significantly reduce the risks of developing pressure related issues in the short and long term. Good health helps promote a more active lifestyle which in turn can positively impact a rider's wellbeing.

OPTIMUM COMFORT

Feeling comfortable increases confidence which helps the rider to achieve an active lifestyle. The likelihood of developing prolonged discomfort, pain and persistent injuries are significantly reduced.

MAXIMISED PERFORMANCE

The rider and wheelchair work in complete unison. This reduces the amount of energy needed to propel and, in turn, increases the wheelchair's efficiency to maximize the rider's abilities.



► ► ► ► ►

DAILY WHEELCHAIRS SUMMARY

CARBON

VEYPR SUB 4



USP	ULTRA LIGHTWEIGHT CARBON FIBRE
RIDER LEVEL	EXPERIENCED
FRAME BUILD	MADE TO MEASURE
FRAME MATERIAL	CARBON FIBER
LIGHTWEIGHT	1 2 3 4 5
STIFFNESS	1 2 3 4 ○
OPTIONS	1 2 ○ ○ ○
SEAT RAIL TUBE SIZE	OVAL 29 mm - 36 mm
TOTAL WEIGHT	5,8 KG
TRANSPORT WEIGHT	3,2 KG
MAX USER WEIGHT	110 KG

OCTANE



ALL ROUNDER TITANIUM
NEW TO EXPERIENCED
MADE TO MEASURE
TITANIUM - GRADE 9
1 2 3 4 ○
1 2 3 ○ ○
1 2 3 4 ○
31.75 mm
7,3 KG
4,8 KG
110 KG

OCTANE FX



FRONT FOLDING TITANIUM
EXPERIENCED
MADE TO MEASURE
TITANIUM - GRADE 9
1 2 3 ○ ○
1 2 3 ○ ○
1 2 3 4 ○
31.75 mm
8 KG
5,5 KG
110 KG

TITANIUM

OCTANE SUB 4



ULTRA LIGHTWEIGHT TITANIUM
EXPERIENCED
MADE TO MEASURE
TITANIUM - GRADE 9
1 2 3 4 5
1 2 3 ○ ○
1 2 3 ○ ○
31.75- mm
6 KG
3,5 KG
110 KG

HILITE



ALL ROUNDER TITANIUM
NEW TO EXPERIENCED
MADE TO MEASURE
TITANIUM - GRADE 2
1 2 3 4 ○
1 2 3 ○ ○
1 2 3 4 5
25 mm
7,5 KG
5 KG
125 KG

HILITE XTR



ALL ROUNDER TITANIUM
NEW TO EXPERIENCED
MADE TO MEASURE
TITANIUM - GRADE 2
1 2 3 4 ○
1 2 3 ○ ○
1 2 3 4 5
25 mm
7,5 KG
5 KG
115 KG

MAXLITE



19MM SEATRAIL TUBE
NEW TO EXPERIENCED
MADE TO MEASURE
TITANIUM - GRADE 2
1 2 3 4 ○
1 2 3 4 ○
1 2 3 4 5
19 mm
7,2 KG
4,7 KG
100 KG

► ► ► ► ►

DAILY WHEELCHAIRS SUMMARY

ALUMINIUM

TIGA



USP	ALL ROUNDER ALUMINIUM
RIDER LEVEL	NEW TO EXPERIENCED
FRAME BUILD	MADE TO MEASURE
FRAME MATERIAL	7020 ALUMINIUM
LIGHTWEIGHT	1 2 3 4 ○
STIFFNESS	1 2 3 4 ○
OPTIONS	1 2 3 4 5
SEAT RAIL TUBE SIZE	30 mm
TOTAL WEIGHT	7,5 KG
TRANSPORT WEIGHT	5 KG
MAX USER WEIGHT	125 KG

TIGA F2



ALL ROUNDER ALUMINIUM
NEW TO EXPERIENCED
MADE TO MEASURE
7020 ALUMINIUM
1 2 3 ○ ○
1 2 3 4 ○
1 2 3 4 5
30 mm
8 KG
5,5 KG
115 KG

TIGA F X



FRONT FOLDING ALUMINIUM
EXPERIENCED
MADE TO MEASURE
7020 ALUMINIUM
1 2 3 ○ ○
1 2 3 4 ○
1 2 3 4 ○
30 mm
9 KG
6,5 KG
110 KG

TIGA SUB 4



ULTRA LIGHTWEIGHT ALUMINIUM
EXPERIENCED
MADE TO MEASURE
7020 ALUMINIUM
1 2 3 4 5
1 2 3 4 ○
1 2 3 ○ ○
30 mm
6 KG
3,5 KG
110 KG

TIGA jr



PAEDIATRIC ALUMINIUM
JUNIOR
MADE TO MEASURE
7020 ALUMINIUM
1 2 3 ○ ○
1 2 3 4 ○
1 2 3 4 5
25 mm & 30 mm
7,5 KG
5 KG
70 KG

CARBON FIBRE FRAME

Carbon Fibre has vibration absorbing qualities which can dampen the impact of rolling on uneven surfaces. One of the key benefits of carbon fibre is its strength to weight ratio. So while this wheelchair is ultra-lightweight it is also extremely strong to provide a smooth yet rigid ride.



A
NEW ERA
IS HERE

VEYPR SUB4



KEY FEATURES

The Veypr Sub4 is our lightest wheelchair yet, where made to measure meets carbon fibre. With new pioneering technology we have produced the worlds first truly made to measure carbon fibre wheelchair.

USP

Rider Level

Frame Build

Frame Material

Lightweight

Stiffness

Options

Seat Rail Tube Size

Total Weight

Transport Weight

Max User Weight

ULTRA LIGHTWEIGHT CARBON FIBRE

EXPERIENCED

MADE TO MEASURE

CARBON FIBRE

1 2 3 4 5

1 2 3 4

1 2

OVAL 29 mm x 36 mm

5,8 KG

3,2 KG

110 KG

100% CARBON
FIBRE FRAME

SUB4
TECHNOLOGY

ERGONOMIC
SEATRAIL
TUBE

HERRINGBONE
WEAVE PATTERN

CARBON FIBRE
FOOTREST

100%
CARBON
FIBRE FRAME

► ► ► ►
TITANIUM FRAME

"I didn't think I would be able to improve my seating position until I got into my new Octane FX. It fits me perfectly, and I feel so much more confident in myself. I never thought small changes would have such a big impact day to day. It's easier to push, lighter and now I can fold it up and take it everywhere! Plus it's so pretty..."

I honestly feel amazing in my Octane FX."

Sophie Carrigill
PARALYMPIAN



OCTANE

KEY FEATURES

The Octane combines the benefits of titanium grade 9 with the versatility of a wide range of options making this the perfect "all rounder" titanium wheelchair.

USP	"All Rounder Titanium"
Rider Level	New to Experienced
Frame Build	Made to Measure
Frame Material	Titanium Grade 9
Lightweight	1 2 3 4
Stiffness	1 2 3
Options	1 2 3 4
Seat Rail Tube Size	31.75mm
Total Weight	7,3kg
Transport Weight	4,8kg
Max User Weight	110kg



OCTANEFX



KEY FEATURES

The Octane FX is the perfect travel companion, so you never have to worry about your wheelchair being damaged by an airline again. The rigid titanium frame folds down to fit into an airline overhead locker* and small spaces so you can make room for more important things in your life.

USP	Front Folding Titanium
Rider Level	Experienced
Frame Build	Made to Measure
Frame Material	Titanium Grade 9
Lightweight	1 2 3 4 5
Stiffness	1 2 3 4 5
Options	1 2 3 4 5
Seat Rail Tube Size	31.75mm
Total Weight	8kg
Transport Weight	5,5kg
Max User Weight	110kg



* May not fit into all overhead lockers, please check with airline prior to travel.

OCTANE SUB4



KEY FEATURES

The titanium revival is upon us with our lightest titanium wheelchair. The Octane Sub has a guaranteed transport weight of less than 4kg* so transferring, propelling, lifting and turning are all effortless.

USP	Ultra Lightweight Titanium
Rider Level	Experienced
Frame Build	Made to Measure
Frame Material	Titanium Grade 9
Lightweight	1 2 3 4 5
Stiffness	1 2 3 4 5
Options	1 2 3 4 5
Seat Rail Tube Size	31.75mm
Total Weight	6kg
Transport Weight	3,5kg
Max User Weight	110kg



* Transport weight.

HILITE

KEY FEATURES

The Hilite is our longest serving wheelchair and continues to provide reliability and quality in its timeless design. This affordable product has the benefits of titanium with a wide range of options.

USP	"All Rounder Titanium"
Rider Level	New to Experienced
Frame Build	Made to Measure
Frame Material	Titanium Grade 2
Lightweight	<input checked="" type="radio"/> 1 <input checked="" type="radio"/> 2 <input checked="" type="radio"/> 3 <input checked="" type="radio"/> 4 <input type="radio"/>
Stiffness	<input checked="" type="radio"/> 1 <input checked="" type="radio"/> 2 <input checked="" type="radio"/> 3 <input type="radio"/> <input type="radio"/>
Options	<input checked="" type="radio"/> 1 <input checked="" type="radio"/> 2 <input checked="" type="radio"/> 3 <input checked="" type="radio"/> 4 <input checked="" type="radio"/> 5
Seat Rail Tube Size	25mm
Total Weight	7,5kg
Transport Weight	5kg
Max User Weight	125kg



GRADE 2
TITANIUM

HILITE XTR

KEY FEATURES

The Hilite XTR is the perfect titanium wheelchair to experience made to measure for the first time. This affordable product has the benefits of titanium with a wide range of options including a crash test upgrade.

USP	"All Rounder Titanium"
Rider Level	New to Experienced
Frame Build	Made to Measure
Frame Material	Titanium Grade 2
Lightweight	<input checked="" type="radio"/> 1 <input checked="" type="radio"/> 2 <input checked="" type="radio"/> 3 <input checked="" type="radio"/> 4 <input type="radio"/>
Stiffness	<input checked="" type="radio"/> 1 <input checked="" type="radio"/> 2 <input checked="" type="radio"/> 3 <input type="radio"/> <input type="radio"/>
Options	<input checked="" type="radio"/> 1 <input checked="" type="radio"/> 2 <input checked="" type="radio"/> 3 <input checked="" type="radio"/> 4 <input checked="" type="radio"/> 5
Seat Rail Tube Size	25mm
Total Weight	7,5kg
Transport Weight	5kg
Max User Weight	115kg



GRADE 2
TITANIUM

MAXLITE

KEY FEATURES

The Maxlite offers a subtle design with a low profile seat rail tube while still benefiting from a titanium frame. Known as the wheelchair that “is barely there”; getting you noticed for all the right reasons.

USP	19mm Seat Rail Tube
Rider Level	New to Experienced
Frame Build	Made to Measure
Frame Material	Titanium Grade 2
Lightweight	1 2 3 4 <input type="radio"/>
Stiffness	1 2 3 4 <input type="radio"/>
Options	1 2 3 4 5
Seat Rail Tube Size	19mm
Total Weight	7,2kg
Transport Weight	4,7kg
Max User Weight	100kg



GRADE 2
TITANIUM



ALUMINIUM FRAME

"I love my chair. It's well made and fits me perfectly. It also transfers onto the front seat of my car really easily."

Ben Tansley



TIGA

The Tiga combines the benefits of aluminium with the versatility of a wide range of options making this the perfect "all rounder" aluminium wheelchair.

USP	Aluminium "All Rounder"
Rider Level	New to Experienced
Frame Build	Made to Measure
Frame Material	7020 Aluminium
Lightweight	1 2 3 4 <input type="radio"/>
Stiffness	1 2 3 4 <input type="radio"/>
Options	1 2 3 4 5
Seat Rail Tube Size	30mm
Total Weight	7,5kg
Transport Weight	5kg
Max User Weight	125kg

KEY FEATURES



AIRTECH UPHOLSTERY

WIDE RANGE OF OPTIONS

LOW PROFILE CASTOR ARM



TIGA F2

The Tiga F2 is the perfect aluminium wheelchair to experience made to measure for the first time. This affordable product has the benefits of aluminium with a wide range of options so you can get the perfect wheelchair for you.

USP	Aluminium "All Rounder"
Rider Level	New to Experienced
Frame Build	Made to Measure
Frame Material	7020 Aluminium
Lightweight	<div><div>1</div><div>2</div><div>3</div><div></div><div></div></div>
Stiffness	<div><div>1</div><div>2</div><div>3</div><div>4</div><div></div></div>
Options	<div><div>1</div><div>2</div><div>3</div><div>4</div><div>5</div></div>
Seat Rail Tube Size	30 mm
Total Weight	8kg
Transport Weight	5,5kg
Max User Weight	115kg

KEY FEATURES



AIRTECH
UPHOLSTERY

WIDE RANGE
OF OPTIONS

LOW PROFILE
CASTOR ARM

AEROSPACE
GRADE
7020
ALUMINIUM

TIGA Fx

Travel worry free with the Tiga FX. The rigid aluminium frame folds down to fit into an airline overhead locker* and small spaces so you can make room for more important things in your life. This lightweight folding wheelchair is the perfect travel companion, so you never have to worry about your wheelchair being damaged by an airline again.

USP	Front Folding Aluminium
Rider Level	Experienced
Frame Build	Made to Measure
Frame Material	7020 Aluminium
Lightweight	<div><div>1</div><div>2</div><div>3</div><div></div><div></div></div>
Stiffness	<div><div>1</div><div>2</div><div>3</div><div>4</div><div></div></div>
Options	<div><div>1</div><div>2</div><div>3</div><div>4</div><div></div></div>
Seat Rail Tube Size	30 mm
Total Weight	9kg
Transport Weight	6,5kg
Max User Weight	110 kg

KEY FEATURES



AIRTECH UPHOLSTERY

COMPACT DESIGN
WITHOUT REAR
BRACE BAR

FOLD FLAT
SIDE GUARDS

Q-LOCK™
FRONT
FOLDING
TECHNOLOGY

HOLLOW FORGED
CASTOR ARM

AEROSPACE
GRADE
7020
ALUMINIUM

* May not fit into all overhead lockers, please check with airline prior to travel.



TIGA SUB4



KEY FEATURES

The Tiga Sub4 is our lightest aluminium wheelchair, with a guaranteed transport weight of less than 4kg* so transferring, propelling, lifting and turning are all effortless.

USP	Ultra Lightweight Aluminium
Rider Level	Experienced
Frame Build	Made to Measure
Frame Material	7020 Aluminium
Lightweight	<input checked="" type="radio"/> 1 <input checked="" type="radio"/> 2 <input checked="" type="radio"/> 3 <input checked="" type="radio"/> 4 <input checked="" type="radio"/> 5
Stiffness	<input checked="" type="radio"/> 1 <input checked="" type="radio"/> 2 <input checked="" type="radio"/> 3 <input checked="" type="radio"/> 4 <input type="radio"/>
Options	<input checked="" type="radio"/> 1 <input checked="" type="radio"/> 2 <input checked="" type="radio"/> 3 <input type="radio"/> <input type="radio"/>
Seat Rail Tube Size	30mm
Total Weight	6kg
Transport Weight	3,5kg
Max User Weight	110kg



TIGA jnr



KEY FEATURES

The Tiga Jnr is the perfect pediatric wheelchair. Built with plenty of growth adjustment while maintaining a lightweight and rigid frame with a wide range of options which gives children the freedom to explore.

USP	Paediatrics Aluminium
Rider Level	Junior
Frame Build	Made to Measure
Frame Material	7020 Aluminium
Lightweight	<input checked="" type="radio"/> 1 <input checked="" type="radio"/> 2 <input checked="" type="radio"/> 3 <input type="radio"/> <input type="radio"/>
Stiffness	<input checked="" type="radio"/> 1 <input checked="" type="radio"/> 2 <input checked="" type="radio"/> 3 <input checked="" type="radio"/> 4 <input type="radio"/>
Options	<input checked="" type="radio"/> 1 <input checked="" type="radio"/> 2 <input checked="" type="radio"/> 3 <input checked="" type="radio"/> 4 <input checked="" type="radio"/> 5
Seat Rail Tube Size	25mm & 30mm
Total Weight	7,5kg
Transport Weight	5kg
Max User Weight	70kg



SPORT



MADE TO MEASURE WITH PRECISION TO THE MILLIMETER

RGK

▶ ▶ ▶ ▶ ▶

SPORT WHEELCHAIRS

PRODUCT AVAILABILITY MAY VARY FROM COUNTRY TO COUNTRY



BASKETBALL

ELITE



*ELITE***X**



*ELITE***X**



TENNIS

GrandSlam



GrandSlam**X**



GrandSlam**X**



RUGBY

PREDATOR



USP
RIDER LEVEL
FRAME BUILD
FRAME MATERIAL
LIGHTWEIGHT
STIFFNESS
OPTIONS
SEAT RAIL TUBE SIZE
TOTAL WEIGHT
MAX USER WEIGHT

LIGHTWEIGHT PERFORMANCE
INTERMEDIATE TO EXPERT (1-4,5 PTS.)
MADE TO MEASURE
7020 ALUMINIUM
1 2 3 4 ○
1 2 3 4 ○
1 2 3 4 ○
22 mm
10,2 KG
125 KG

ULTRA LIGHTWEIGHT PERFORMANCE
INTERMEDIATE TO EXPERT (1-4,5 PTS.)
MADE TO MEASURE
7020 ALUMINIUM
1 2 3 4 5
1 2 3 4 5
1 2 3 4 ○
22 mm
9,8 KG
125 KG

CARBON FIBRE SEAT PERFORMANCE
EXPERT (3-4,5 PTS.)
MADE TO MEASURE
7020 ALUMINIUM
1 2 3 4 5
1 2 3 4 5
1 2 3 ○ ○
22 mm
10 KG
125 KG

LIGHTWEIGHT PERFORMANCE
INTERMEDIATE TO EXPERT (OPEN/QUAD)
MADE TO MEASURE
7020 ALUMINIUM
1 2 3 4 ○
1 2 3 4 ○
1 2 3 4 ○
22 mm
10,2 KG
125 KG

ULTRA LIGHTWEIGHT PERFORMANCE
INTERMEDIATE TO EXPERT (OPEN/QUAD)
MADE TO MEASURE
7020 ALUMINIUM
1 2 3 4 5
1 2 3 4 5
1 2 3 4 ○
22 mm
9,8 KG
125 KG

CARBON FIBRE SEAT PERFORMANCE
EXPERT (OPEN)
MADE TO MEASURE
7020 ALUMINIUM
1 2 3 4 5
1 2 3 4 5
1 2 3 ○ ○
22 mm
10 KG
125 KG

DURABLE PERFORMANCE
EXPERT (3-4,5 PTS.)
MADE TO MEASURE
7020 ALUMINIUM
1 2 ○ ○ ○
1 2 3 4 5
1 2 3 4 ○
25 mm
12 KG
125 KG

► ► ► ► ►

SPORT WHEELCHAIRS

2023 RANGE

PRODUCT AVAILABILITY MAY VARY
FROM COUNTRY TO COUNTRY



MULTI-SPORT

CLUB SPORT



USP	ENTRY LEVEL MULTI SPORT
RIDER LEVEL	BEGINNER
FRAME BUILD	CONFIGURABLE
FRAME MATERIAL	CHROME MOLY
LIGHTWEIGHT	1 2 ○ ○ ○
STIFFNESS	1 2 3 ○ ○
OPTIONS	1 2 ○ ○ ○
SEAT RAIL TUBE SIZE	19 mm
TOTAL WEIGHT	12,6 KG
MAX USER WEIGHT	125 KG

ALLSTAR



USP	LIGHTWEIGHT MULTI SPORT
RIDER LEVEL	BEGINNER TO INTERMEDIATE JUNIORS
FRAME BUILD	MADE TO MEASURE
FRAME MATERIAL	7020 ALUMINIUM
LIGHTWEIGHT	1 2 3 ○ ○
STIFFNESS	1 2 3 ○ ○
OPTIONS	1 2 3 4 ○
SEAT RAIL TUBE SIZE	22 mm
TOTAL WEIGHT	11 KG
MAX USER WEIGHT	100 KG

ALLSTAR G2



USP	LIGHTWEIGHT MULTI SPORT
RIDER LEVEL	BEGINNER TO INTERMEDIATE
FRAME BUILD	MADE TO MEASURE
FRAME MATERIAL	7020 ALUMINIUM
LIGHTWEIGHT	1 2 3 ○ ○
STIFFNESS	1 2 3 4 ○
OPTIONS	1 2 3 4 ○
SEAT RAIL TUBE SIZE	22 mm
TOTAL WEIGHT	11 KG
MAX USER WEIGHT	115 KG

ALLSTAR A2



USP	ADJUSTABLE MULTI SPORT
RIDER LEVEL	BEGINNER
FRAME BUILD	MADE TO MEASURE & CONFIGURABLE
FRAME MATERIAL	7020 ALUMINIUM
LIGHTWEIGHT	1 2 3 ○ ○
STIFFNESS	1 2 3 ○ ○
OPTIONS	1 2 3 ○ ○
SEAT RAIL TUBE SIZE	22 mm
TOTAL WEIGHT	11,5 KG
MAX USER WEIGHT	125 KG

HANDBIKE / RACING

SHARKAS



USP	COMPETITIVE PERFORMANCE
RIDER LEVEL	INTERMEDIATE TO EXPERT
FRAME BUILD	CONFIGURABLE
FRAME MATERIAL	ALUMINIUM
LIGHTWEIGHT	1 2 3 4 ○
STIFFNESS	1 2 3 4 ○
OPTIONS	1 2 3 ○ ○
SEAT RAIL TUBE SIZE	-
TOTAL WEIGHT	FROM 12,9 KG
MAX USER WEIGHT	125 KG

SHARKART



USP	RECREATIONAL HANDCYCLE
RIDER LEVEL	BEGINNER TO INTERMEDIATE
FRAME BUILD	CONFIGURABLE
FRAME MATERIAL	ALUMINIUM
LIGHTWEIGHT	1 2 3 ○ ○
STIFFNESS	1 2 3 ○ ○
OPTIONS	1 2 3 4 ○
SEAT RAIL TUBE SIZE	-
TOTAL WEIGHT	FROM 14,9 KG
MAX USER WEIGHT	125 KG

SPRINT



USP	LIGHTWEIGHT PERFORMANCE
RIDER LEVEL	BEGINNER TO EXPERT
FRAME BUILD	MADE TO MEASURE
FRAME MATERIAL	7020 ALUMINIUM
LIGHTWEIGHT	1 2 3 4 ○
STIFFNESS	1 2 3 4 ○
OPTIONS	1 2 3 4 ○
SEAT RAIL TUBE SIZE	OVAL 70 mm x 38 mm
TOTAL WEIGHT	9 KG
MAX USER WEIGHT	115 KG

► ► ► ►
BASKETBALL

“Chair after chair I am still
deciphering - whether it’s the chair’s
weight, its stiffness, or all of the
above - but undeniably, there’s
something special about these
wheelchairs.”

Patrick Anderson
3X PARALYMPIC GOLD MEDALIST

Patrick rides the Elite X.



ELITE



KEY FEATURES

The world famous Elite is the ultimate basketball wheelchair, supporting national teams with high performance wheelchairs since London 2012. The lightweight Elite delivers maximum stiffness and exceptional rolling performance whilst reacting instantly with minimal effort.

USP	Lightweight Performance
Rider Level	Intermediate to expert (1-4.5)
Frame Build	Made to Measure
Frame Material	7020 Aluminium
Lightweight	1 2 3 4 ○
Stiffness	1 2 3 4 ○
Options	1 2 3 4 ○
Seat Rail Tube Size	22mm
Total Weight	10,2kg
Max User Weight	125kg



ELITE X



KEY FEATURES

The best just got better with the Elite X, combining the tried and tested with new technology and materials. The ultra lightweight frame and carbon fibre technology delivers unparalleled stiffness and efficiency, providing athletes with the highest performance. reacting instantly with minimal effort.

USP	Ultra Lightweight Performance
Rider Level	Intermediate to Expert (1-4.5 pts)
Frame Build	Made to Measure
Frame Material	7020 Aluminium
Lightweight	1 2 3 4 5
Stiffness	1 2 3 4 5
Options	1 2 3 4 <input type="radio"/>
Seat Rail Tube Size	22mm or 25mm
Total Weight	9,8kg
Max User Weight	125kg



* Available option.

ELITE CX



KEY FEATURES

The Elite CX is our most advanced basketball wheelchair, combining all the benefits of the Elite X with a carbon fibre seat. This combination provides the ultimate connection to the athlete, delivering unrivaled responsiveness and maneuverability.

USP	Carbon Fibre Seat Performance
Rider Level	Expert (3-4,5 pts)
Frame Build	Made to Measure
Frame Material	7020 Aluminium
Lightweight	1 2 3 4 5
Stiffness	1 2 3 4 5
Options	1 2 3 <input type="radio"/> <input type="radio"/>
Seat Rail Tube Size	22mm
Total Weight	10kg
Max User Weight	125kg



► ► ► ► ►
TENNIS

“Wheelchair tennis is my passion and as I continue to push my limits and strive for greatness, I’m certain of one thing: I wouldn’t trade my RGK Wheelchair for anything else, and I wouldn’t play in any other wheelchair.”

Alfie Hewett
23-MAJOR CHAMPION
(AND COUNTING)

Alfie rides the GrandSlam CX.



GrandSlam



KEY FEATURES

The GrandSlam is the ultimate tennis wheelchair, supporting Paralympic athletes with high performance wheelchairs. The lightweight GrandSlam delivers maximum stiffness and exceptional rolling performance whilst reacting instantly with minimal effort.

USP	Lightweight Performance
Rider Level	Intermediate to Expert (Open/Quad)
Frame Build	Made to Measure
Frame Material	7020 Aluminium
Lightweight	1 2 3 4 ○
Stiffness	1 2 3 4 ○
Options	1 2 3 4 ○
Seat Rail Tube Size	22mm
Total Weight	10,2kg
Max User Weight	125kg



GrandSlamX



KEY FEATURES

The next generation in wheelchair tennis, the GrandSlam X combines the tried and tested with new technology and materials. The ultra lightweight frame and carbon fibre technology delivers unparalleled stiffness and efficiency, providing athletes with the highest performance.

USP	Ultra Light Weight Performance
Rider Level	Intermediate to Expert (Open/Quad)
Frame Build	Made to Measure
Frame Material	7020 Aluminium
Lightweight	1 2 3 4 5
Stiffness	1 2 3 4 5
Options	1 2 3 4 <input type="radio"/>
Sea Rail Tube Size	22mm
Total Weight	9,8kg
Max User Weight	125kg



* Available option.

GrandSlamCX



KEY FEATURES

The Elite CX is our most advanced basketball wheelchair, combining all the benefits of the Elite X with a carbon fibre seat. This combination provides the ultimate connection to the athlete, delivering unrivaled responsiveness and maneuverability.

USP	Carbon Fibre Seat Performance
Rider Level	Expert (Open)
Frame Build	Made to Measure
Frame Material	7020 Aluminium
Lightweight	1 2 3 4 5
Stiffness	1 2 3 4 5
Options	1 2 3 <input type="radio"/> <input type="radio"/>
Seat Rail Tube Size	22mm
Total Weight	10kg
Max User Weight	125kg



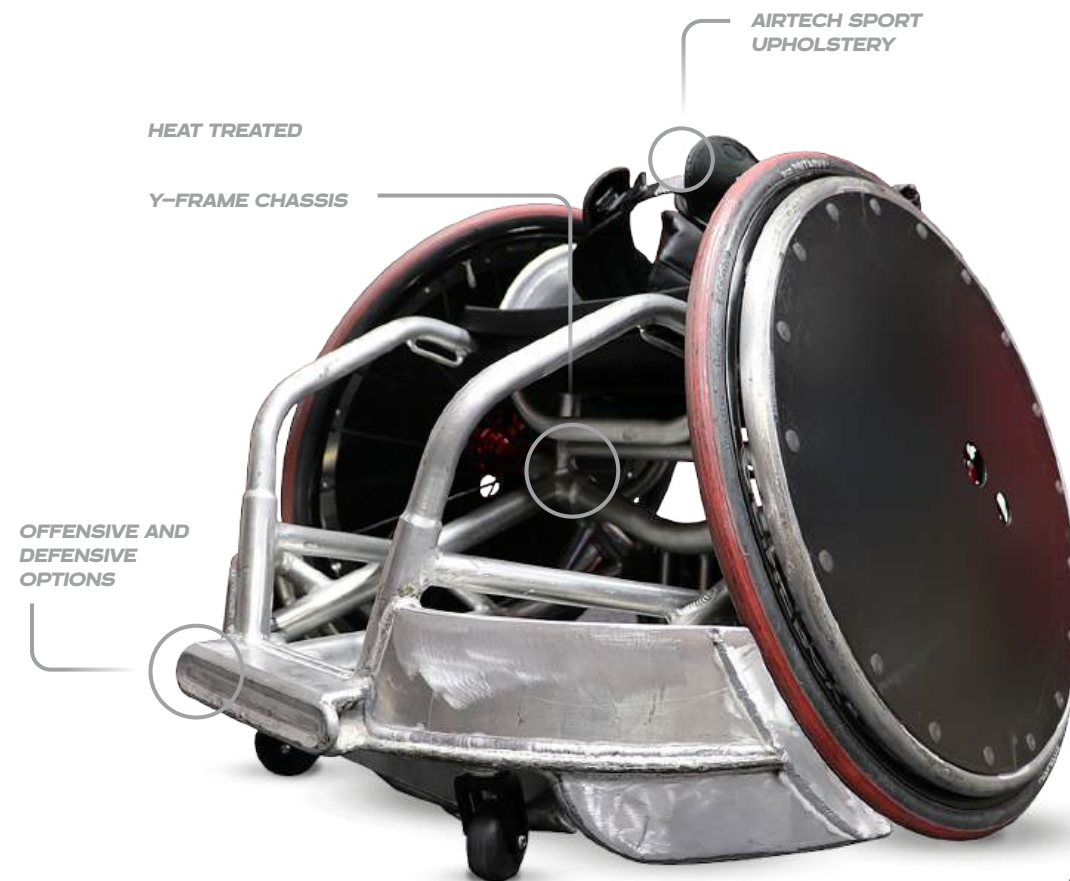
PREDATOR



KEY FEATURES

The Predator is a high performance quad rugby wheelchair which is responsive, lightweight but incredibly durable. The low centre of gravity improves stability during contact so players can stay in more control.

USP	Durable Performance
Rider Level	Intermediate to Expert
Frame Build	Made to Measure
Frame Material	7020 Aluminium
Lightweight	1 2 <input type="radio"/> <input type="radio"/> <input type="radio"/>
Stiffness	1 2 3 4 5
Options	1 2 3 4 <input type="radio"/>
Seat Rail Tube Size	25mm
Total Weight	12kg
Max User Weight	125kg



AEROSPACE
GRADE
7020
ALUMINIUM

CLUB SPORT



KEY FEATURES

The Club Sport is the ideal sports wheelchair for clubs, schools and organisations looking to provide reliable and cost effective equipment for their participants. The rigid steel frame provides longevity and reliability so program leaders can focus on developing "grassroots" in wheelchair sports.

USP	Entry Level Multisport
Rider Level	Beginner
Frame Build	Configurable
Frame Material	Chrome Moly
Lightweight	1 2 <input type="radio"/> <input type="radio"/> <input type="radio"/>
Stiffness	1 2 3 <input type="radio"/> <input type="radio"/>
Options	1 2 <input type="radio"/> <input type="radio"/> <input type="radio"/>
Seat Rail Tube Size	19mm
Total Weight	12,6kg
Max User Weight	125kg



CHROME
MOLY
FRAME

ALLSTAR



MULTI-SPORT

KEY FEATURES

The Allstar is the perfect club sports wheelchair for junior players looking to experience made to measure for the first time. This versatile product covers many different sports and comes with adjustment options as standard so players can fine tune their setup as they develop.

USP	Lightweight Multi Sport
Rider Level	Beginner to Intermediate
Frame Build	Made to Measure
Frame Material	7020 Aluminium
Lightweight	1 2 3 <input type="radio"/> <input type="radio"/>
Stiffness	1 2 3 <input type="radio"/> <input type="radio"/>
Options	1 2 3 4 <input type="radio"/>
Seat Rail Tube Size	22mm
Total Weight	11kg
Max User Weight	100kg



ALLSTAR G2



MULTI-SPORT

KEY FEATURES

The Allstar G2 is the perfect club sports wheelchair for adult players looking to experience made to measure for the first time. This versatile product covers many different sports and comes with adjustment options as standard so players can fine tune their setup as they develop.

USP	Lightweight Multi Sport
Rider Level	Beginner to Intermediate
Frame Build	Made to Measure
Frame Material	7020 Aluminium
Lightweight	1 2 3 <input type="radio"/> <input type="radio"/>
Stiffness	1 2 3 <input type="radio"/> <input type="radio"/>
Options	1 2 3 4 <input type="radio"/>
Seat Rail Tube Size	22mm
Total Weight	11kg
Max User Weight	115kg



ALLSTAR A2



MULTI-SPORT

KEY FEATURES

The Allstar A2 is the ultimate multi-sport wheelchair and is revolutionising club sports. With extensive adjustability options, this is the perfect wheelchair for clubs or up and coming players just starting out in wheelchair sports. With an adjustable seat height that utilises an ergonomic seat design, it can cater to a diverse range of individuals, making it the ultimate choice for everyone.

USP	Adjustable Multi Sport
Rider Level	Beginner
Frame Build	Made to Measure & Configurable
Frame Material	7020 Aluminium
Lightweight	<input checked="" type="radio"/> 1 <input checked="" type="radio"/> 2 <input checked="" type="radio"/> 3 <input type="radio"/> 4 <input type="radio"/> 5
Stiffness	<input checked="" type="radio"/> 1 <input checked="" type="radio"/> 2 <input checked="" type="radio"/> 3 <input type="radio"/> 4 <input type="radio"/> 5
Options	<input checked="" type="radio"/> 1 <input checked="" type="radio"/> 2 <input checked="" type="radio"/> 3 <input type="radio"/> 4 <input type="radio"/> 5
Seat Rail Tube Size	25mm
Total Weight	11,5kg
Max User Weight	120kg



AEROSPACE
GRADE
7020
ALUMINIUM

SHARK RS



HANDBIKE

KEY FEATURES

The choice of champions. The Shark RS is a competition handbike designed to allow for the best individual positioning. Enclosing the driver, when force is introduced, it's converted directly into propulsion.

USP	Competitive Performance
Rider Level	Intermediate to expert
Frame Build	Configurable
Frame Material	Aluminium
Lightweight	<input checked="" type="radio"/> 1 <input checked="" type="radio"/> 2 <input checked="" type="radio"/> 3 <input checked="" type="radio"/> 4 <input type="radio"/> 5
Stiffness	<input checked="" type="radio"/> 1 <input checked="" type="radio"/> 2 <input checked="" type="radio"/> 3 <input checked="" type="radio"/> 4 <input type="radio"/> 5
Options	<input checked="" type="radio"/> 1 <input checked="" type="radio"/> 2 <input checked="" type="radio"/> 3 <input type="radio"/> 4 <input type="radio"/> 5
Weight	From 12,9kg
Frame Width	34 - 42 cm in 2 cm increments
Rear	Angle Adjustable 20° to 60°
Crank Lenth	155-175 mm in 5 mm increments
Gear	3x11
Brake	PERFORMANCE

LIGHTWEIGHT REAR AXLE FIXATION
WITH FORGED PARTS

INNOVATIVE PERFORMANCE
BACKREST

LIGHTWEIGHT RIGID
FRONT FORK



LOW COG & WIDE WHEELBASE

AEROSPACE
GRADE
7020
ALUMINIUM

SHARK RT



HANDBIKE

KEY FEATURES

For leisure and semi-professional athletes. Delivering the same outstanding performance as the Shark RS, the Shark RT offers more adjustability and flexibility, which means you can achieve your optimum position to rule the road.

USP

Rider Level

Frame Build

Frame Material

Lightweight

Stiffness

Options

Weight

Frame Width

Rear

Crank Lenth

Gear

Brake

Recreational handcycle

Beginner to Intermediate

Configurable

Aluminium

1 2 3 4 5

1 2 3 4 5

1 2 3 4 5

From 14,9 kg

38/40/42 cm

Angle Adjustable 20° to 60°

175 mm

3x10

STANDARD



RACING

“My new RGK Sprint looks and feels great. It has been exciting to create a made to measure frame and work on finding a more efficient position for me! My frame feels really stiff and secure, so I feel much more powerful when I race.”

Melanie Woods
PARALYMPIAN



SPRINT



RACING

KEY FEATURES

The Sprint is the ultimate lightweight racing wheelchair suitable for beginners right through to experts looking for high performance. Boasting many different options, athletes can choose their optimal set up depending on their ability and rider level.

USP

Lightweight Performance

Rider Level

Beginner to Expert

Frame Build

Made to Measure

Frame Material

7020 Aluminium

Lightweight

1 2 3 4 ☐

Stiffness

1 2 3 4 ☐

Options

1 2 3 4 ☐

Central Tube Size

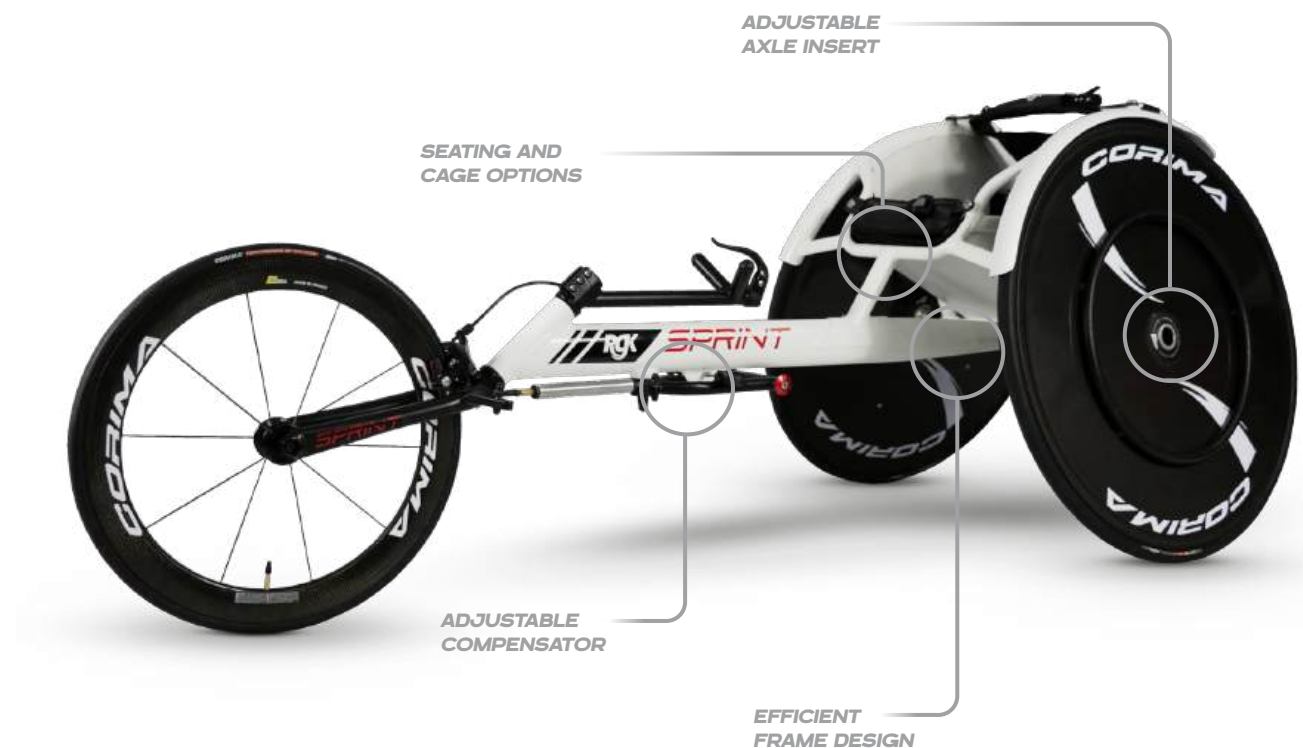
Oval 70mm x 38mm

Total Weight

9kg

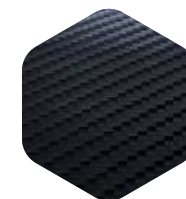
Max User Weight

115kg

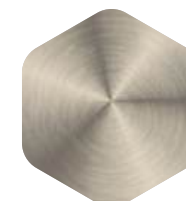


USE OF MATERIALS

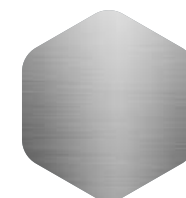
Our entire range is made using only the best materials. Our range is comprised of carbon fibre, titanium and aluminium.



CARBON FIBRE has vibration absorbing qualities which can dampen the impact of rolling on uneven surfaces. One of the key benefits of carbon fibre is its strength to weight ratio. So while it is ultra-lightweight it is also extremely strong which means the energy transfer when pushing is extremely efficient to provide a smooth yet rigid ride.



TITANIUM has natural vibration absorbing qualities which allows for a smooth and comfortable ride. It is also known for its exceptional strength to weight ratio, anti corrosion properties and durability. RGK purchase only the finest grades of Titanium 2 and 9 and follow strict procedures in order to use it in our manufacture process.



ALUMINIUM offers a more direct and efficient ride, and is best used when performance is more important than comfort. Often recognised by its versatility, aluminium is also one of the best materials used for making high quality wheelchairs. RGK only uses A7020, the finest grade of aluminium, and on some models carry out a special heat treatment process in order to reduce weight.

► ► ► ► **GLOSSARY**

- **SUB4TECHNOLOGY.** By making 72 minute but fundamental changes and alterations that many would simply neglect to notice, we have produced ultra-lightweight technology to ensure every Sub4 wheelchair has a guaranteed transport weight of less than 4KG. The key upgrades were made in areas such as upholstery where we use Airtech material which is lightweight but tough and comfortable for longevity. Titanium fixings are used to cut down on weight and prevent corrosion along with many other changes to cut down on weight without compromising on rigidity and stability.
- **TRANSPORTWEIGHT.** Refers to the weight of the product minus wheels and cushion. This is the product weight when transferring into the car etc.
- **PRODUCTWEIGHT.** Refers to the total weight of the product, this is including the wheels and cushion.
- **MADETO MEASURE.** Refers to the RGK made to measure process. All made to measure products are hand crafted from a straight tube by a single individual. Our wheelchairs are crafted to fit the rider where they can determine measurements to millimetre precision, unlike other made to measure products that are configurable sizes.
- **ERGONOMIC OPTIONS.** Refers to the options that only made to measure can offer. Options include ergonomic backrests, seats and front frame. These are unique measurements that allow the frame to be contoured to the rider's body to aid with balance and comfort.
- **STIFFNESS.** Refers to the rigidity of the frame based in the material type and options. The less stiff a frame is, the more vibrations it absorbs making it a more comfortable ride. While a stiffer frames is more efficient for optimum performance.
- **EFFICIENCY.** Refers to the distribution and transfer of energy while pushing the wheelchair. Less efficient wheelchairs absorb energy and vibration to create a smooth ride whereas more efficient wheelchairs transfer energy directly, so riders need less energy to push.
- **TRI FRAME CHASSIS.** Refers to the brand new frame design that better distributes the energy created during play across more sections of the chair for optimum strength and reliability.
- **Y FRAME CHASSIS.** Refers to the brand new frame design that lowers the center of gravity to deal with direct contact.
- **RIDER EXPERIENCE.** Refers to the rider's wheelchair skills, ability and experience. A new rider could be newly injured or experiencing sports for the first time whereas an experienced rider is looking for optimum performance and/or comfort. RGK has a range of wheelchairs available to cover all levels of experience.



www.rgkwheelchairs.com

RGK Wheelchairs Ltd.
Unit 8a/b/c Ring Road Zone 2,
Burntwood Business Park,
Burntwood, Staffordshire, WS73JQ, UK

Phone +441543670077
Email: sales@rgkwheelchairs.com

